



What to Expect at the

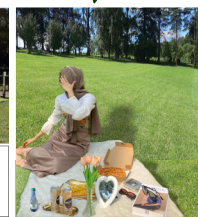
WATERFALL RANCH

DARGLE, MIDLANDS MEANDER, KZN

www.waterfallranch.co.za - 073 313 7869

DAY VISIT

"Rustic Charm, Natural Beauty"



Among the animals to see are a variety of...Horses, Alpacas, Chickens, Ducks, Swans, Ostriches, Cattle, Sheep, Goats, Exotic Birds, Poultry, Turkeys, Flamingos, Springbok, Zebra & much more.



Note: The ranch is open for Day Visits only on the first and last weekend of each month, (Weather Permitting) including the Bottega Coffee Shop. The Coffee Shop offers Light Meals & Beverages

- Horse Riding ●
- Duck Pond ●
- Farm Animals ●
- Walking Trails ●
- Coffee Shop ●
- Function Hall ●
- Getaway Cabin ●
- Braai & Picnic Spots ●
- Impressive Waterfall ●

FUNCTION HALL

Add an authentic countryside experience to your event.



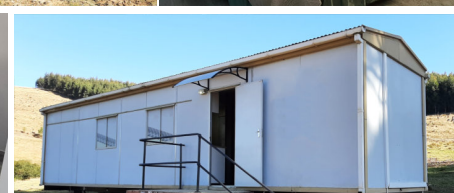
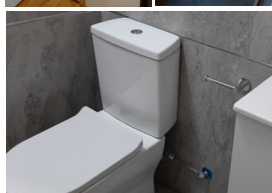
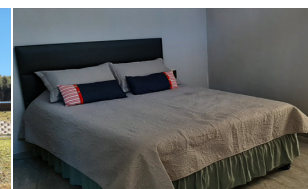
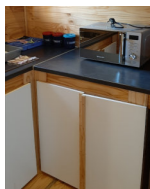
Suitable for Corporate Events, Conference, Birthday Celebration, or an Exclusive Wedding. The venue hall includes table & chairs and can cater for a capacity of up to 220 guests.

Includes separate entrances for male & female, separate washrooms and separate serving hatches in the kitchens

Visit our website for more info and pricing

GETAWAY CABINS

Soak up the peaceful serenity in the heart of the Midlands Meander



Fully furnished 1 & 2 Room Self-Catering VIP cabins and countryside rustic Eco Cabins
1 room eco cabin sleeps 2 adults and a toddler, the 2 room eco cabin with the coaches sleeps 6 adults, the 1 room VIP cabin sleep 4. More info on website.

Book your school for a field trip to the WATERFALL RANCH



A unique interactive opportunity for children to meet the animals up close.



Lots of play area for various sports

Kids will have the time of their lives! Get the kids out of the confines of the classroom and into the fresh air this school year by embarking on a fun filled educational adventure. We cater for kids of all ages.



No need to pack a lunch box, Bottega Mobile Coffee Shop can be arranged to be on site, offering Light Meals and Beverages

FOLLOW GOOGLE MAPS TO WATERFALL RANCH - 55km FROM PIETERMARITZBURG - Enter through Gate No. 2

Strictly - No alcohol permitted on premises